



# ABLON CONSTRUCTION

1996/020922/23 – VAT: 4450 167 954

## KIMBERLEY

Sunny Rock Business Park, Unit 11  
C/O Struben & Silson Road  
Tel: (053) 861 1630  
Cell: 082 384 7690  
E-mail: [jaco@ablon.co.za](mailto:jaco@ablon.co.za)

## WELKOM

125 Power Road, Industria  
PO Box 57026, Pansig, 9465  
Tel: (057) 352 1081/92  
Cell: 082 493 8278  
E-mail: [tender@ablon.co.za](mailto:tender@ablon.co.za)



## COMPANY PROFILE

### Our Mission

To contribute to the growth, distribution, innovation, safety, and quality of sustainable electricity in South Africa.

### Our Vision

To be the first choice of contractor in the electrical infrastructure development and construction services in Africa. In so doing, being directly involved in the positive future economy of the continent at large. For us, quality is a way of life - because we strive not only to be the biggest, but the BEST.

### Overview

Ablon Construction is a well-established BEE compliant company that provides electrical infrastructure development and construction services to Eskom, the Renewable Energy Sector, the mining industry and municipal distributors throughout South Africa. Our headquarters are well situated in Welkom, Free State – located in central South Africa. In addition to this, we have an office in Kimberley, Northern Cape to extend our reach.

We specialise in the Design, Supply, Construction and Commissioning of: up to 132kV Substations, up to 132kV Overhead Power Lines, OPGW/ADSS fibre optic installation testing and commissioning. (Eskom Self build Turnkey Projects)



## ABLON CONSTRUCTION

1996/020922/23 – VAT: 4450 167 954

### KIMBERLEY

Sunny Rock Business Park, Unit 11  
C/O Struben & Silson Road  
Tel: (053) 861 1630  
Cell: 082 384 7690  
E-mail: [jaco@ablon.co.za](mailto:jaco@ablon.co.za)

### WELKOM

125 Power Road, Industria  
PO Box 57026, Pansig, 9465  
Tel: (057) 352 1081/92  
Cell: 082 493 8278  
E-mail: [tender@ablon.co.za](mailto:tender@ablon.co.za)

The company's ongoing success is primarily due to a core of experienced, highly competent construction professionals with a "hands on" approach to achieving a high standard of quality. Our Senior Management team possesses a wealth of local and international experience in commercial, civil, and electrical construction work. In addition to an experienced management team, we have motivated artisans, skilled and semi-skilled employees in teams large enough to ensure that we can deliver our projects on time and to the required standard. At Ablon Construction our core competencies include the pro-active management of all construction activities from inception - through on-site construction and careful financial management.

## Our Recognitions and Accreditations

Standards provide guidance and tools to ensure that our services consistently meet client requirements and are of the highest quality. We achieve these standards by complying to the rules and regulations set forth – therefore ensuring the safety of our people and working without compromising the environment in which we operate - this keeping us a forerunner in the high voltage construction field. The quality assurance, construction, testing and commissioning resources of Ablon Construction are of a world-class standard.

Ablon has an Integrated Management system consisting of the following: ISO 9001:2015 Certified Quality Management System, ISO 45001:2018 Certified Occupational Health & Safety Management System, ISO 14001:2015 Certified Environmental Management System. We are also registered with the Electrical Contractors Association, CIDB, CSD (central supplier database), FEM (Federated Employers Mutual assurance), and the NBCEI (National Bargaining Council for The Electrical Industry of South Africa).





## ABLON CONSTRUCTION

1996/020922/23 – VAT: 4450 167 954

### KIMBERLEY

Sunny Rock Business Park, Unit 11  
C/O Struben & Silson Road  
Tel: (053) 861 1630  
Cell: 082 384 7690  
E-mail: [jaco@ablon.co.za](mailto:jaco@ablon.co.za)

### WELKOM

125 Power Road, Industria  
PO Box 57026, Pansig, 9465  
Tel: (057) 352 1081/92  
Cell: 082 493 8278  
E-mail: [tender@ablon.co.za](mailto:tender@ablon.co.za)



### Training, Health & Safety Policies

We believe that a commitment to our workforce means that we can provide the best service to our clients. We show this commitment by having training, safety and health policies that are in accordance with government statutes as well as by setting our own high standards - and by insisting on our staff's rigorous adherence to them.

### Black Economic Empowerment (B-BBEE):

#### Construction Contractors – Generic (Revised Code)

Ablon Construction, a Level 1 Contributor (135% Procurement Recognition Level), is regularly audited by an external, recognised BEE rating company and adheres to the latest Codes of Good Practice as set out by the government regarding: Ownership, Management & Control, Skills Development, Enterprise Development, Supplier Development, and Socio-Economic Development.

We continue to actively seek new BEE stakeholders that add value to the company. We are also a major supporter of black empowerment in small business and we purposely look for BEE enterprises in our procurement process.





## ABLON CONSTRUCTION

1996/020922/23 – VAT: 4450 167 954

### KIMBERLEY

Sunny Rock Business Park, Unit 11  
C/O Struben & Silson Road  
Tel: (053) 861 1630  
Cell: 082 384 7690  
E-mail: [jaco@ablon.co.za](mailto:jaco@ablon.co.za)

### WELKOM

125 Power Road, Industria  
PO Box 57026, Pansig, 9465  
Tel: (057) 352 1081/92  
Cell: 082 493 8278  
E-mail: [tender@ablon.co.za](mailto:tender@ablon.co.za)

## Renewable Energy

To further our involvement in innovation and electrical infrastructure in South Africa, Ablon Construction is an Eskom Approved Supplier that renders a complete turn-key solution for the Supply, Construction and Commissioning of 11kV to 132kV Switching Stations, Step-up Stations and Sub-Transmission Power Lines for the Solar-, Wind- and CSP Energy projects that are currently taking place in South Africa.

We have completed several Solar-, Wind- and CSP Energy Projects up to Grid Connection, building good relationships with the major contractors and EPC companies working with foreign and domestic investors to alleviate conventional reliance on a single source of electricity production. Since middle 2020 a PV construction team was put together specializing in the complete turn-key construction of PV plants.

The PV Plant team is led by Charles Deacon as project manager responsible for the civil, mechanical and DC, LV and MV electrical works disciplines. The team's lead construction manager is Loyiso Majwete who has extensive experience on the installation of various type of fixed and tracker structures. Both of the said personnel have 10yr+ experience in the PV construction industry. The team is also supported by seasoned in-house construction managers, supervisors and foremen for the civil and electrical works.

## Projects completed

Ablon construction is one of the most trusted service providers of electrical infrastructure construction in South Africa. We have rendered quality services to major projects nationally, particularly for ESKOM. We pride ourselves with working successfully to meet deadlines. Below is a list of projects successfully completed over the last decade:

### 2011-2012

CLIENT	SITE	DESCRIPTION OF WORK
Eskom	Germiston Substation	Built 2x132kV Feeders and 132kv Busbar
Eskom	Bedfordview Substation	Built 2x132kV Feeders and 132kv Busbar
Eskom	Isando Substation	Built 3x66kV Feeders and 66kv Busbar
Eskom	Palmridge Sub	Built 2x132kV Feeders and 132kv Busbar
Eskom	Palmridge Line	Built 4km 132kV D/C Line Self Supporting Mono Poles Structure



## ABLON CONSTRUCTION

1996/020922/23 – VAT: 4450 167 954

### KIMBERLEY

Sunny Rock Business Park, Unit 11  
C/O Struben & Silson Road  
Tel: (053) 861 1630  
Cell: 082 384 7690  
E-mail: [jaco@ablon.co.za](mailto:jaco@ablon.co.za)

### WELKOM

125 Power Road, Industria  
PO Box 57026, Pansig, 9465  
Tel: (057) 352 1081/92  
Cell: 082 493 8278  
E-mail: [tender@ablon.co.za](mailto:tender@ablon.co.za)

<b>Eskom</b>	Ferrum Line	Built 3.2 km 132kV Lines and 132kV Busbar Mono Poles
<b>Eskom</b>	Kathu Substation	Built 1 x 132/11kV TRFR Bay and 11kV Feeder Bay's
<b>Eskom</b>	Ferrum Umtu 132kv D/C Line	Built 34 km D/C Sub-Transmission Line 245 Towers Type B,C,D,E

### 2013-2014

<b>Scatec Solar</b>	Kalkbult Solar Project	Built 132kV 4 bay Switching Station with 2 x 40MVA TRFR Bays
<b>Cobra Gransolar</b>	Lesedi Switching Station	Built 132kV 3 bay Switching Station with 1 x 132kV By-pass B/B
<b>Cobra Gransolar</b>	Lesedi Substation	Built 2 x 132kV 40MVA TRFR Bay and 22kV Switchgear Bay's
<b>Cobra Gransolar</b>	Lesedi 132kV Line	Built 1.8 km 132kV Loop in Loop out Power Line
<b>Cobra Gransolar</b>	Letsatsi Solar Project	Built 3xBay 132kV Switching Station with 2 x 40MVA TRFR Bays
<b>Scatec Solar</b>	Linde Solar Substation	Built 3xBay 132kV Switching Station with 2 x 20MVA TRFR Bays
<b>Scatec Solar</b>	Dreunberg Solar Substation	Built 132kV 4 bay Switching Station with 2 x 40MVA TRFR Bays
<b>Eskom</b>	Umtu Klipkop 132kV Line	Built 16.8 km 132kV Sub Transmission Line
<b>GDSA</b>	Umtu Klipkop 132kV Line OPGW	Install OPGW/ADSS on newly built 132KV line
<b>Group Five/Iberdrola</b>	Jasper Solar Project	Built 3xBay 132kV Switching Station with 2 x 40MVA TRFR Bays
<b>Eskom</b>	Reries Matopeng 22KV line	Built 20km single circuit 22KV HARE line

### 2015 - 2016

<b>Eskom</b>	KDS Homestead 132kV Line	Built 11.4 km D/C Sub-Transmission Line 245 Towers Type B,C,
<b>Eskom</b>	Reries Gamonarie 22KV	Built 25km single circuit 22KV HARE line
<b>Sterling and Wilson</b>	De Aar Solar 3	Built 2 x 132kV 40MVA TRFR Bay and 22kV Switchgear Bay's
<b>Sterling and Wilson</b>	De Aar Solar 3	Built 16 km D/C Twin Tern Sub-Transmission Line 245 Towers Type B, C,
<b>Eskom</b>	Klevebank Substation	Built 1 x 132kV 40MVA TRFR Bay
<b>Eskom</b>	Etwatwa Substation	Built 1 x 132kV 40MVA TRFR Bay Install 11kV Cable Feeder
<b>GDSA</b>	Aries Nuwehoop 400KV line	Install OPGW/ADSS on the newly built 400KV line 70km
<b>Juwi Solar</b>	Juwi Solar Project	Built 2xBay 132kV Switching Station with 1 x 80MVA TRFR Bays





## ABLON CONSTRUCTION

1996/020922/23 – VAT: 4450 167 954

### KIMBERLEY

Sunny Rock Business Park, Unit 11  
C/O Struben & Silson Road  
Tel: (053) 861 1630  
Cell: 082 384 7690  
E-mail: [jaco@ablon.co.za](mailto:jaco@ablon.co.za)

### WELKOM

125 Power Road, Industria  
PO Box 57026, Pansig, 9465  
Tel: (057) 352 1081/92  
Cell: 082 493 8278  
E-mail: [tender@ablon.co.za](mailto:tender@ablon.co.za)

<b>Juwi Solar</b>	Juwi Solar Project	Built 2,5km single circuit Kingbird 132KV line with OPGW fibre link
-------------------	--------------------	---

### 2017 - 2018

<b>Liciastar</b>	Kathu Solar 1	Built 8 km D/C Tern Line, Eskom 3 Bay Switching Station,
<b>Eskom</b>	Vierfontein Viljoenskroon 88KV line	Built 25KM single circuit Kingbird line
<b>Eskom</b>	Bulfontein Substation	Built 132/11kV 40MVA Substation
<b>Eskom</b>	Hotazel Eldoret	Built 16 km single circuit 132KV Tern line
<b>Eskom</b>	Ovaal Substation	132kV Reactor Feeder Bay and 132kV Capacitor Bank Feeder Bay
<b>Eskom</b>	Taaiput Substation	Built 1 x 132kV 20MVA TRFR Bay and 22kV Busbar and Feeders

### 2019 -2020

CLIENT	SITE	DESCRIPTION OF WORK
<b>Eskom</b>	Gamohaam Ruries 132KV line	Construct new 18 KM 132KM ACSR Tern line from Eskom Ruries SS to Eskom Gamohaam SS
<b>Juwi Solar</b>	Droogfontein Solar PV 2	132kV Warthog Switching Station, 132/22kV Droogfontein Substation 8.4 km Double Circuit 132kV Kimberley DS – Macfarlane Traction OHL to Warthog Switching Station
<b>Juwi Solar</b>	Bokamoso Solar	132/22kV 80MVA Bokamoso Substation, 132kV LILO Lines for Bokamoso PV Farm
<b>Juwi Solar</b>	Waterloo Solar	132kV Waterloo Switching Station, 132kV Waterloo PV Line, 132kV Mookodi MTS – Waterloo SWS OPGW
<b>Tshipi E Ntle Manganese Mining</b>	Tshipi Borwa Grid power project	Tshipi Borwa 132/11kV Substation Tshipi 11kV Reticulation, Borwa Mine 11kV Distribution System
<b>Raubex</b>	Copperton Windfarm	132kV Cuprum-Modderpan 8.15km Single Circuit Overhead Line, 132kV Modderpan Switching Station
<b>Ingweguard</b>	De Wildt Solar	New Zolograph 2 bay Eskom switching station with IPP substation and 88KV LILO lines, Madibeng line deviations and new ADSS fiber optic link Installation of Mechanical substructure for tracker system, install modules, connect and test for 30MWac portion of plant.
<b>TSK</b>	Greefspan 2 Solar	Siyacuma 2 bay Eskom switching station with IPP substation and 132KV LILO lines with fiber optic link
<b>Raubex</b>	Roggeveld	BonEspirange Komsberg 132kV Overhead Line, 132kV Bonespirange Substation



## ABLON CONSTRUCTION

1996/020922/23 – VAT: 4450 167 954

### KIMBERLEY

Sunny Rock Business Park, Unit 11  
C/O Struben & Silson Road  
Tel: (053) 861 1630  
Cell: 082 384 7690  
E-mail: [jaco@ablon.co.za](mailto:jaco@ablon.co.za)

### WELKOM

125 Power Road, Industria  
PO Box 57026, Pansig, 9465  
Tel: (057) 352 1081/92  
Cell: 082 493 8278  
E-mail: [tender@ablon.co.za](mailto:tender@ablon.co.za)

### Projects 2021

CLIENT	SITE	DESCRIPTION OF WORK
<b>WBHO</b>	Karusa Wind Farm	Construct the 132kV Komsberg-Hidden Valley OHL Construct the 33kV Karusa Overhead Power Line
<b>WBHO</b>	Soetwater Wind Farm	Construct the 132kV Heuwels-Hidden Valley OHL 33kV Soetwater Overhead Power Line
<b>Juwi Solar</b>	Evander Gold Mine	6.6 Elikhulu Solar Switching Station 6.6kV Elikhulu Solar SWS – Shaft 7 Substation Line at Elikhulu Tailings Plant Installation of complete tracker system, modules fitment, connection, testing, installation of string inverters, installation of MV Trf stations, all cabling installation, testing and commissioning of DC, LV and MV systems. All civil works, eg roads, trenches, stormwater management, drilling, ramming, concrete works included.
<b>Solar Capital</b>	Loeriesfontein Orange 75MW PV Farm	132/22kV Gousblom IPP Substation 132kV Narosies Collector Station 132kV Helios MTS-Narosies Sub-Transmission Line
<b>sepcoll</b>	Redstone 100Mwe Solar Thermal Power Plant	Construct the 132kV Noko Switching Station Construct the 132kV Overhead Line

### Projects 2022

CLIENT	SITE	DESCRIPTION OF WORK
<b>Northam Platinum Limited</b>	Zondereinde Western Extension Project Phase 1	Construct the 132kV Zondereinde Substation Construct the IPP Substation Construct the Facility Substation
<b>Ivanplats (PTY) Ltd</b>	Platreef Project	Construct the 132kV Overhead Line 1 & 2
<b>Ivanplats (PTY) Ltd</b>	Platreef Project	Construct the 132kV Substation
<b>Two River Platinum</b>	Merensky Project	Construct the 132V Merensky-Uchoba Line (Phase 1)
<b>SOLA WBHO JV</b>	Merak MSP 2 & MSP 3 Project	Gridworks: Equip 132kV Feeder Bay at Watershed MTS; Construct a new 132kV Overhead Line between Watershed MTS to the Merak Collector Station; Construct a new 132kV Merak Collector Station; Construct the new 132/22kV Merak 2 & 3 IPP Substation; Construct a new 33kV Overhead Line from IPP Substation to Merak 2 PV Plant; Construct Construct the Merak 2 PV Plant Switchgear Room.



## **ABLON CONSTRUCTION**

1996/020922/23 – VAT: 4450 167 954

### **KIMBERLEY**

Sunny Rock Business Park, Unit 11  
C/O Struben & Silson Road  
Tel: (053) 861 1630  
Cell: 082 384 7690  
E-mail: [jaco@ablon.co.za](mailto:jaco@ablon.co.za)

### **WELKOM**

125 Power Road, Industria  
PO Box 57026, Pansig, 9465  
Tel: (057) 352 1081/92  
Cell: 082 493 8278  
E-mail: [tender@ablon.co.za](mailto:tender@ablon.co.za)

---

### **Contact us on:**

#### **1. Mel Steyn – Director and CEO**

Cell: 082 493 8278

Email: [Mel@ablon.co.za](mailto:Mel@ablon.co.za)

#### **2. Junior Letaoana - Director**

Cell: 082 335 0914

Email: [Junior@ablon.co.za](mailto:Junior@ablon.co.za)

#### **3. Jaco Jordaan – Project Manager**

Cell: 082 384 7690

Email: [Jaco@ablon.co.za](mailto:Jaco@ablon.co.za)

#### **4. Charles Deacon – Project Manager**

Cell: 082 496 2629

Email: [Charles@ablon.co.za](mailto:Charles@ablon.co.za)





## ABLON CONSTRUCTION

1996/020922/23 – VAT: 4450 167 954

### KIMBERLEY

Sunny Rock Business Park, Unit 11  
C/O Struben & Silson Road  
Tel: (053) 861 1630  
Cell: 082 384 7690  
E-mail: [jaco@ablon.co.za](mailto:jaco@ablon.co.za)

### WELKOM

125 Power Road, Industria  
PO Box 57026, Pansig, 9465  
Tel: (057) 352 1081/92  
Cell: 082 493 8278  
E-mail: [tender@ablon.co.za](mailto:tender@ablon.co.za)

### Photo Gallery:





## ABLON CONSTRUCTION

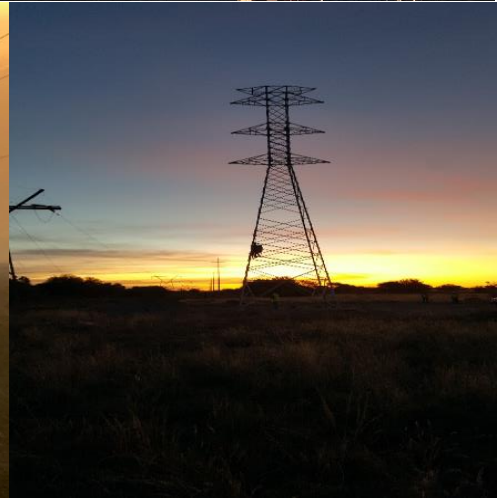
1996/020922/23 – VAT: 4450 167 954

### KIMBERLEY

Sunny Rock Business Park, Unit 11  
C/O Struben & Silson Road  
Tel: (053) 861 1630  
Cell: 082 384 7690  
E-mail: [jaco@ablon.co.za](mailto:jaco@ablon.co.za)

### WELKOM

125 Power Road, Industria  
PO Box 57026, Pansig, 9465  
Tel: (057) 352 1081/92  
Cell: 082 493 8278  
E-mail: [tender@ablon.co.za](mailto:tender@ablon.co.za)







## ABLON CONSTRUCTION

1996/020922/23 – VAT: 4450 167 954

### KIMBERLEY

Sunny Rock Business Park, Unit 11  
C/O Struben & Silson Road  
Tel: (053) 861 1630  
Cell: 082 384 7690  
E-mail: [jaco@ablon.co.za](mailto:jaco@ablon.co.za)

### WELKOM

125 Power Road, Industria  
PO Box 57026, Pansig, 9465  
Tel: (057) 352 1081/92  
Cell: 082 493 8278  
E-mail: [tender@ablon.co.za](mailto:tender@ablon.co.za)





## ABLON CONSTRUCTION

1996/020922/23 – VAT: 4450 167 954

### KIMBERLEY

Sunny Rock Business Park, Unit 11  
C/O Struben & Silson Road  
Tel: (053) 861 1630  
Cell: 082 384 7690  
E-mail: [jaco@ablon.co.za](mailto:jaco@ablon.co.za)

### WELKOM

125 Power Road, Industria  
PO Box 57026, Pansig, 9465  
Tel: (057) 352 1081/92  
Cell: 082 493 8278  
E-mail: [tender@ablon.co.za](mailto:tender@ablon.co.za)

